

**TOTAL RATED LOADS (kg)**

**TM-45Z**

Working Radius (m)	2.1	2.5	3.0	3.5	4.0	4.5	5.0	5.5	6.0
Total Rated Load (kg)	4,000	3,350	2,800	2,400	2,100	1,850	1,650	1,500	1,350

**TM-45ZH**

3.41m/5.82m boom length

Working Radius (m)	2.1	2.5	2.7	3.0	3.5	4.0	4.5	5.0	5.5
Total Rated Load (kg)	4,000	3,250	3,000	2,700	2,300	2,000	1,800	1,600	1,450

8.2m boom length

Working Radius (m)	2.1	2.5	2.7	3.0	3.5	4.0	4.5	5.0	5.5	6.0	6.5	7.0	7.5	8.0
Total Rated Load (kg)	3,000	3,000	3,000	2,700	2,300	2,000	1,800	1,600	1,450	1,350	1,250	1,150	1,050	1,000

**Notes:**

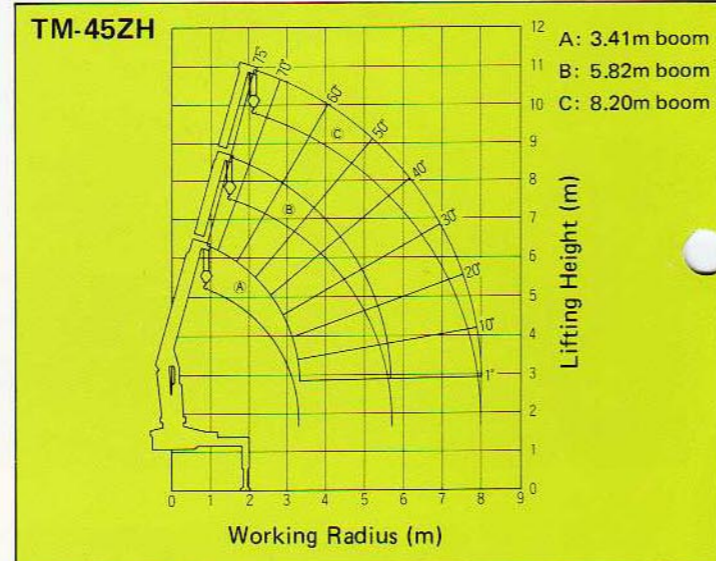
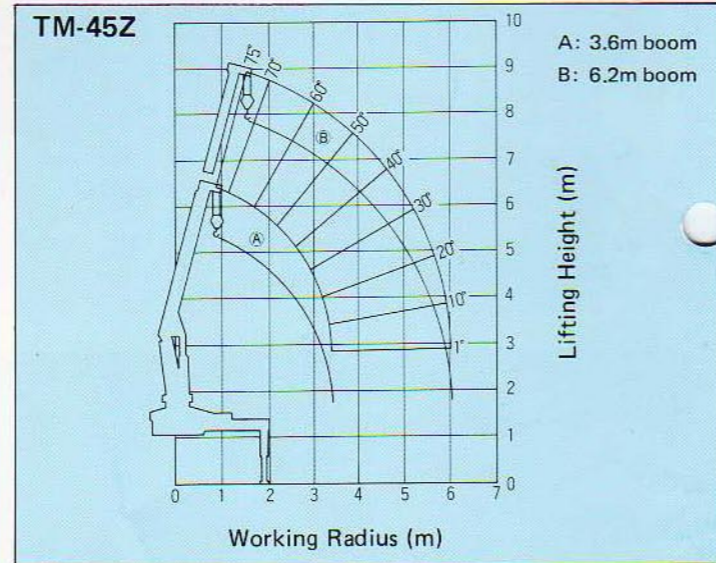
1. The weight of the hook (45kg), slings and other ancillary lifting devices must be added to the weight of the load.

2. The total rated loads are based on crane strength only. Total rated loads based on truck stability may be lower than those in the above tables. This will depend on the type of chassis and its laden condition.

**TECHNICAL SPECIFICATIONS**

MODEL	TM-45Z	TM-45ZH
<b>MAXIMUM CAPACITY</b>	4,000kg at 2.1m	
<b>BOOM</b>	Box type, full power telescoping under load	
Type		
Sections	2	3
Length	3.6m - 6.2m centres	3.41m - 8.2m centres
Extension speed	Min. - max. in 14sec	Min. - max in 24sec
Elevation range/speed	1° - 75° in 15sec	
Maximum tip height	Approx. 8.9m*	Approx. 10.9m*
Maximum hook height	Approx. 7.7m*	Approx. 9.7m*
Maximum working radius	6.0m*	8.0m*
<b>WINCH</b>	Axial piston motor with spur gear reduction and power lowering with an automatic fail-safe brake	
Type		
Permissible single line pull	800kg	
Maximum single line speed	56m/min off the top (4th) layer	54m/min off the top (4th) layer
Wire rope	54m x 9mm	66m x 8mm
<b>SWING</b>	360° continuous swing on heavy duty ball-bearing swing ring driven by axial piston motor through worm reduction gearing	
Speed	2.5rpm	
<b>OUTRIGGERS</b>	Integral with crane frame with manually operated slider beams and hydraulically operated jacks with check valves. Power up and down	
Extended width		
- maximum	3.75m centres	
- midway	3.00m centres	
<b>HYDRAULIC SYSTEM</b>	Single gear pump	
Pump		
Control valves	Multiple control valve bank with integral pressure relief valve	
Oil reservoir	Contents approx. 40ℓ	Contents approx. 40ℓ
	Total circuit contents approx. 64.5ℓ	Total circuit contents approx. 68ℓ
<b>SAFETY EQUIPMENT</b>	Load Meter Load Indicator Overhoist alarm Hook safety latch Pressure relief valve Counterbalance valves Check valves	

**WORKING RANGES\***



**NOTES**

- \* no allowance made for boom deflection under laden conditions
- Operating speeds are based on a pump delivery of 45ℓ/min.
- Continuing technical development requires Tadano to retain the right to make specification, equipment and price changes without notice.

**TADANO TRUCK LOADER CRANES**

**TM-45Z/ZH**

**8.4 tm**  
**TM-45Z 6.2m boom (2 section)**  
**TM-45ZH 8.2m boom (3 section)**



**TADANO**

**TADANO LTD.**

World Trade Center Bldg.  
 4-1, Hamamatsu-cho 2-chome, Minato-ku  
 Tokyo 105, Japan  
 Telephone: Tokyo 435-3611  
 Cable: TADANIRCO TOKYO  
 Telex: 23755



# POWER BOOM PLUS POWER WINCH BOOST BUSINESS-LOWER COSTS

Tadano's new TM-45Z Series truck loader cranes not only make light work of any load but also increase your range of business applications. Easily fitted to almost any type of large size truck with a vehicle weight of 4.2 tons or more, these highly efficient 4 ton capacity truck loader cranes enable you to load, transport and unload almost any kind of cargo in complete safety, and with minimum manpower. Tadano's highly effective combination of full power boom and powerful hydraulic winch allows you to handle even really awkward loads in normally difficult situations. And needless to say, maintenance and costly down-time are minimised — a well proven design and Tadano quality see to that. Tadano's TM-45Z and TM-45ZH, versatile, cost-saving and plain common sense.

Highly efficient return line filtration

Tough but lightweight 2 or 3 section booms

Full power boom telescoping cylinders

Powerful hydraulic winch for easy load handling

Smooth, continuous 360° swing

Fingertip control levers on both sides

Well balanced and compact frame

(Beam retracted)

Wide-span hydraulic outriggers

(Beam extended)

# THE MOST EFFICIENT WAY TO LOAD, TRANSPORT AND UNLOAD

## TWO OR THREE SECTION FULL LENGTH POWER BOOMS

Both booms power telescope, the two section TM-45Z from 3.6 – 6.2m and the three section TM-45ZH from 3.41 – 8.2m. Counterbalance valves are fitted to the telescope and elevation cylinders to provide smooth, positively controlled boom retraction and lowering — the working range is 1° – 75°. The telescope cylinders are located inside the boom to provide a compact design of low overall height — easy maintenance access is designed in from the start. The use of high tensile steel in the booms gives a strong but lightweight design of crane with higher lifting capacities and higher vehicle payload.

## POWERFUL HYDRAULIC WINCH

The winch is a key feature of the Tadano TM Series truck loader range. The high starting torque axial piston motor with its easy 'inching' characteristics makes it simple to handle even fragile loads and, with its 800kg line pull, provides smooth, powerful hoisting and lowering through a single lever control. An automatic fail-safe brake ensures that the operator is always in control. Coupled with the power telescoping boom, the winch gives real flexibility.

## TOUGH COMPACT DESIGN

Tadano's truck loader design features — the tough, lightweight boom; well balanced and compact frame and wide-span outriggers enable these TM Series cranes to offer excellent lifting capacities as well as maintain cargo payload and loading space.

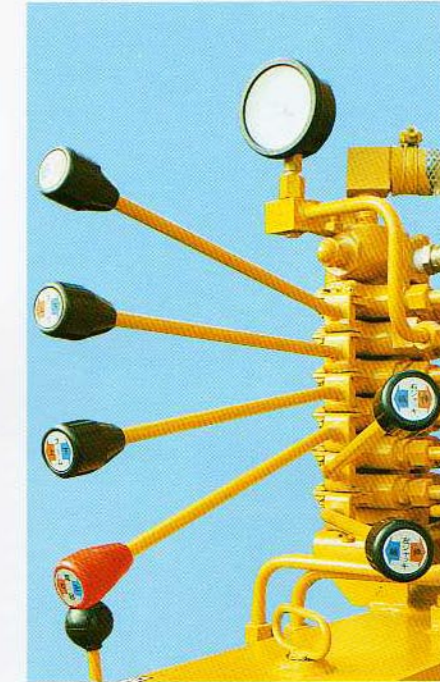


## FINGERTIP CONTROLS

All crane functions are controlled by levers accessible from both sides of the truck. The swing control is grooved to make it easily distinguishable in the dark. Speeds are governed by the engine accelerator lever and the fingertip controls make light work of any job.

## CONTINUOUS SWING THROUGH 360°

For easy loading and unloading the crane swings continuously through 360° on a heavy duty ball-bearing swing ring. Drive is provided by a high torque axial piston motor through reduction gearing. Braking is fully automatic.



## WIDE-SPAN HYDRAULIC OUTRIGGERS

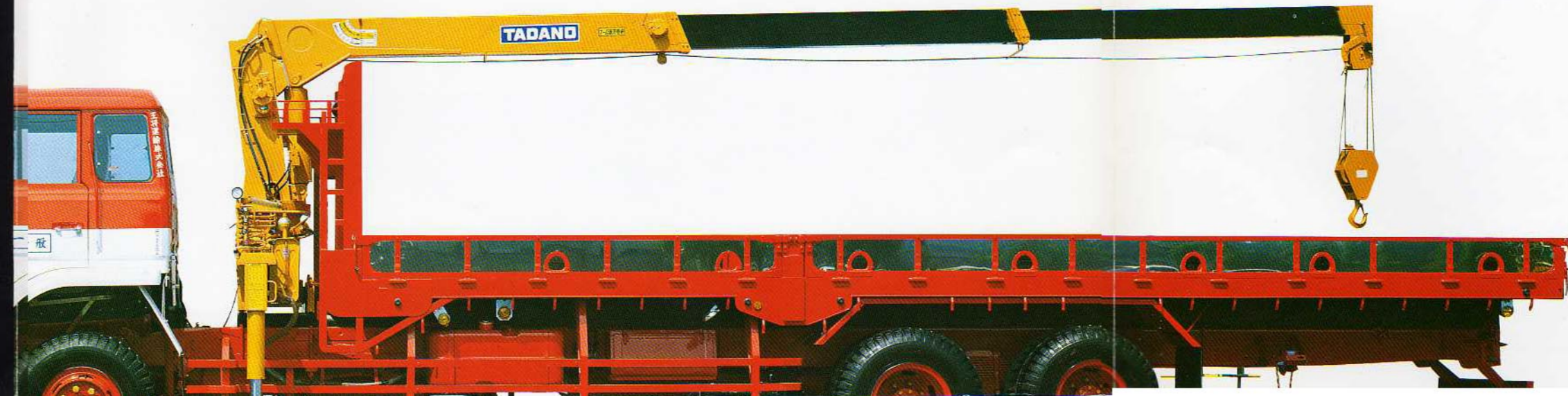
The outrigger beams slide out manually to give a 3.75m centres blocking base. For work in confined spaces they can also be pinned at 3.0m centres. The hydraulic jacks, with their integral check valves, extend or retract independently or simultaneously.

## RETURN LINE FILTRATION

Both the TM-45Z and TM-45ZH feature return line filtration through a replaceable cartridge type oil filter. The hydraulic oil reservoir is fitted with a sight level gauge.

## COMPREHENSIVE SAFETY EQUIPMENT

Tadano's proven technology, which has made the company one of the world's leading hydraulic crane manufacturers, has been put to good use in the design of the TM-45Z and TM-45ZH. All load bearing cylinders are fitted with safety valves as a precaution against hose failure. Counterbalance valves are fitted to the telescope and elevation cylinders to provide smooth retraction and lowering under positive control. A pressure relief valve is fitted to guard against hydraulic circuit overload. Tadano truck loaders are fitted with an overhoist alarm to prevent two-blocking when hoisting, a Load Meter which shows the load on the hook and a Load Indicator which shows the boom angle and permissible load for the boom length in use. Both of these latter safety devices can be read from either side of the crane.



\* The machine illustrated above is the sample model of the Tadano TM Series, and differs slightly from the one supplied.