

# Link-Belt®

Offshore Cranes



**Over the years**, the offshore market has continued to expand and customers demanded that offshore cranes be of an efficient design... in terms of both performance and serviceability. FMC has had the technology to respond to these specialized needs of the oil industry

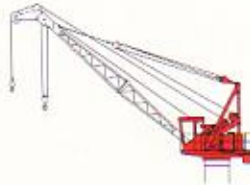
and as a result has shipped over 1,000 Link-Belt® cranes for offshore work.

FMC has further expanded its commitment to the offshore industry and focused the resources of its engineering facility and over 80 years of lift crane experience to design a

line of Link-Belt cranes specifically for offshore performance. The result is a series of hydraulically operated and mechanically operated offshore cranes backed by Link-Belt service and worldwide parts availability.

## Hydraulically operated cranes

### "Seahawk Series"



**API-65**



**API-100**

Maximum capacity	32.50 ton (29.50 metric ton)	50.00 ton (45.39 metric ton)
Capacity @ 50' (15.24 m) radius	9.90 ton (8.99 metric ton)	16.40 ton (14.89 metric ton)
Boom tip extension capacity	6.00 ton (5.45 metric ton)	9.00 ton (8.17 metric ton)
Maximum crane boom	100' (30.48 m)	120' (36.58 m)
Main drum (line pull/line speed)	—	—
1st wrap	12,610 lbs. (5 720 kg) @ 201 fpm (61.26 m/min)	17,660 lbs. (8 011 kg) @ 204 fpm (62.18 m/min)
6th wrap	8,590 lbs. (3 896 kg) @ 295 fpm (89.92 m/min)	12,198 lbs. (5 533 kg) @ 295 fpm (89.92 m/min)
Tailswing	7' 7" (2.31 m)	8' 6" (2.59 m)
Overall height	14' 7½" (4.46 m)	20' 6" (6.25 m)
Working weight	26,000 lbs. (11 794 kg)	40,000 (18 144 kg)

**Codes:** Designated machines are designed and manufactured to meet all requirements of the following codes. Individual machines may be certified by ABS or DNV upon request.

#### API Compliance

API Specification for Offshore Cranes, API Spec. 2-C, third edition, March 1983.

#### USCG

May be certified by ABS or other agent to comply with current API 2-C code.

#### ABS Compliance

Requirements for Certification of Construction and Survey of Cargo Gear on Merchant vessels — 1975, American Bureau of Shipping.

#### DNV Compliance (case approval)

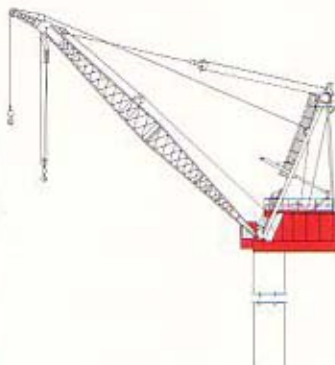
Det Norske Veritas — Rules of Certification of Lifting Appliances, November 1980. (Type approval pending.)

# Link-Belt® hydraulically operated offshore cranes

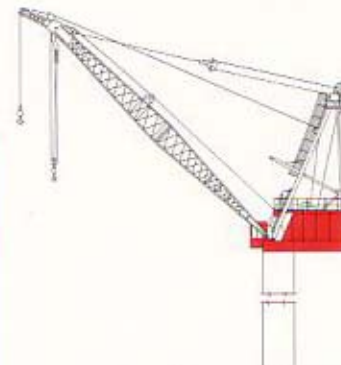
FMC offers a line of Link-Belt hydraulically powered cranes for offshore and marine operation. Built to commercial, ABS or API specifications, each crane model is capable of delivering the specialized performance demands of the offshore environment.

These cranes offer long reach, increased lifting capacity capabilities at extended radii, high line speeds and pulls for greater crane production.

## Hydraulically operated cranes "Seahawk Series"



**ABS/API-1500**



**ABS/API-1700**

	<b>ABS-1500</b>	<b>ABS-1700</b>
Maximum capacity	71.45 ton (64.82 metric ton)	102.40 ton (92.90 metric ton)
Capacity @ 50' (15.24 m) radius	47.90 ton (43.45 metric ton)	54.55 ton (49.49 metric ton)
Maximum crane boom	160' (48.77 m)	160' (48.77 m)
Main drum (line pull/line speed)	—	—
Low speed	35,700 lbs. (16 193 kg) @ 191 fpm (58.22 m/min)	51,200 lbs. (23 224 kg) @ 152 fpm (46.33 m/min)
Medium speed	14,700 lbs. (6 668 kg) @ 369 fpm (112.47 m/min)	35,900 lbs. (16 284 kg) @ 234 fpm (71.32 m/min)
High speed	8,800 lbs. (3 992 kg) @ 675 fpm (205.74 m/min)	13,900 lbs. (6 305 kg) @ 532 fpm (162.15 m/min)
Overall length	26' 10" (8.16 m)	26' 10" (8.16 m)
Overall width	13' 4" (4.06 m)	13' 4" (4.06 m)
Working weight	151,000 lbs. (68 494 kg)	128,000 lbs. (58 060 kg)
	<b>API-1500</b>	<b>API-1700</b>
Maximum capacity	73.50 ton (66.72 metric ton)	115.00 ton (104.40 metric ton)
Capacity @ 50' (15.24 m) radius	41.65 ton (37.78 metric ton)	61.50 ton (55.79 metric ton)
Maximum crane boom	160' (48.77 m)	160' (48.77 m)
Main drum (line pull/line speed)	—	—
Low speed	37,000 lbs. (16 783 kg) @ 191 fpm (58.22 m/min)	58,000 lbs. (26 309 kg) @ 152 fpm (46.33 m/min)
Medium speed	14,700 lbs. (6 668 kg) @ 369 fpm (112.47 m/min)	35,900 lbs. (16 284 kg) @ 234 fpm (71.32 m/min)
High speed	8,800 lbs. (3 992 kg) @ 675 fpm (205.74 m/min)	13,900 lbs. (6 305 kg) @ 532 fpm (162.15 m/min)
Overall length	26' 10" (8.16 m)	26' 10" (8.16 m)
Overall width	13' 4" (4.06 m)	13' 4" (4.06 m)
Working weight	151,000 lbs. (68 494 kg)	174,000 lbs. (78 925 kg)

## Link-Belt® mechanically operated offshore cranes

FMC offers a line of Link-Belt mechanically operated cranes for offshore and marine operation. Built to commercial,

ABS, API, or DNV specifications, each model is capable of delivering the specialized performance demands of the offshore environment.

To fulfill the offshore needs, these cranes feature the exclusive Speed-o-Matic® power hydraulic control system. Also available are stainless

steel hydraulic lines for added protection against salt water corrosion; power load lowering; 2-speed cable hoist drums; catwalks; auxiliary jib; special crane exterior paints for long life and reduced maintenance cost; spark arrestor muffler — all for efficient, specialized offshore application.

### Mechanically operated cranes



**ABS-48A**



**ABS-78A**



**ABS-108B**

Capacity	18.40 ton (16.69 metric ton)	35.25 ton (31.97 metric ton)	51.00 ton (46.30 metric ton)
Maximum crane boom	80' (24.38 m)	100' (30.48 m)	100' (30.48 m)
Line speed @ line pull	250 fpm @ 5,000 lbs. <sup>1</sup> (76.20 m/min @ 2 268 kg)	346 fpm @ 5,000 lbs. <sup>1</sup> (105.46 m/min @ 2 268 kg)	447 fpm @ 5,000 lbs. <sup>1</sup> (136.25 m/min @ 2 268 kg)
Maximum line pull	10,800 lbs. (4 899 kg)	17,200 (7 802 kg)	23,000 lbs. (10 433 kg)
Overall length w/catwalk	13' 10" (4.21 m)	16' 10" (5.13 m)	18' 3" (5.57 m)
Overall width	12' 3" (3.74 m)	13' 0" (3.96 m)	13' 2 1/4" (4.02 m)
Working weight	22,410 lbs. (10 165 kg)	40,485 lbs. (18 363 kg)	51,675 lbs. (23 439 kg)

### Mechanically operated cranes



**ABS-138A**



**ABS/API-218A**



**ABS/API-238A**

Capacity	65.00 ton (58.96 metric ton)	88.20 ton (80.07 metric ton)	114.30 ton (103.69 metric ton)
Maximum crane boom	150' (45.72 m)	150' (45.72 m)	150' (45.72 m)
Line speed @ line pull	317 fpm @ 10,000 lbs. <sup>2</sup> (96.62 m/min @ 4 536 kg)	377 fpm @ 10,000 lbs. <sup>2</sup> (114.90 m/min @ 4 536 kg)	424 fpm @ 10,000 lbs. <sup>2</sup> (129.23 m/min @ 4 536 kg)
Maximum line pull	16,800 lbs. (7 620 kg)	22,700 lbs. (10 297 kg)	26,000 lbs. (11 794 kg)
Overall length w/catwalk	24' 1" (7.33 m)	25' 0" (7.62 m)	25' 0" (7.62 m)
Overall width w/catwalk	17' 3" (5.25 m)	17' 3" (5.25 m)	17' 3" (5.25 m)
Working weight	76,400 lbs. (34 655 kg)	85,900 lbs. (38 964 kg)	108,700 lbs. (49 306 kg)

<sup>1</sup>Standard speed <sup>2</sup>With optional two-speed planetary

We are constantly improving our products and therefore reserve the right to change designs and specifications.

**FMC Corporation** Construction Equipment Group Bannockburn Illinois 60015

Link-Belt® cranes & excavators manufactured in: Cedar Rapids Iowa • Lexington & Bowling Green Kentucky • Ontario Canada • Milan Italy • Queretaro Mexico & Nagoya Japan (under license)