

Link-Belt®**LS-718****250-Ton Crawler Crane**

(226.75 metric ton)

(Preliminary)



LS-718 dimensions and lifting capacities in brief

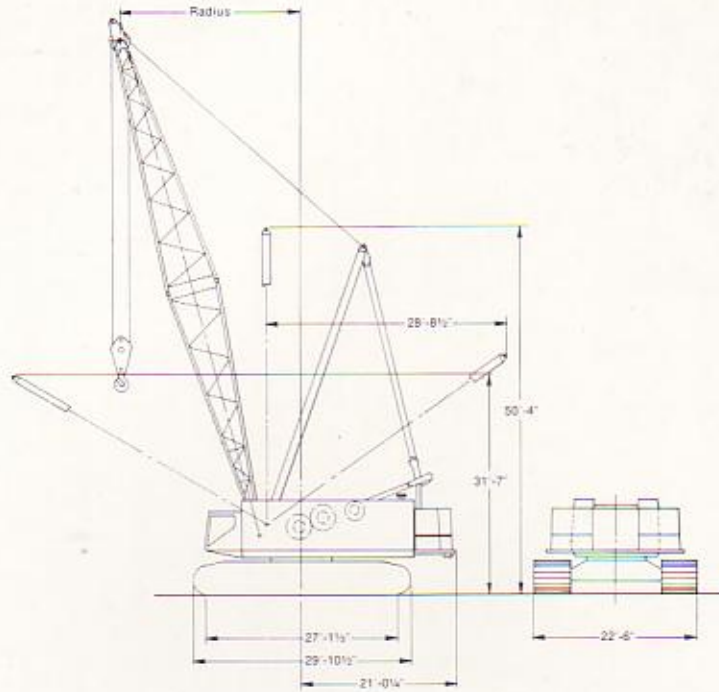
Heavy duty boom and jib to 360' (109.73m) length

Weight	Pounds	Kgs.
Working weight with 70' (21.34m) boom	405,000	183,708
Crane upper weight, cwt. removed (includes laggings)	86,000	39,010
Crane counterweight	120,000	54,432
Crawler mounting Lower frame	43,350	19,664
Side frame with 60" (1.52m) shoes (each)	61,500	27,896
Crane attachment with live mast	24,000	10,886
Catwalks	3,850	1,746
1,655' (504.44m) of 1½" (31.8mm) wire rope	4,800	2,177

Crane attachment — 70' (21.34m) heavy duty basic boom (35' (10.67m) top and 35' (10.67m) bottom); 40' (12.19m) live mast. Boompoint contains five sheaves, all mounted on anti-friction bearings.

Counterweight — raised and lowered hydraulically.

Lifting capacities



Standard heavy duty open throat boom 85' (2.16m) deep x 100" (2.54m) wide							
Boom length	Load radius		Boom angle	"A" counterweight		"AB" counterweight	
	Feet	Meters		Pounds	Kgs.	Pounds	Kgs.
70' (21.34m)	17	5.18	81.6	419,600	190,058	500,000*	226,800*
	20	6.10	79.1	299,000	135,626	407,100*	184,661*
	30	9.14	70.6	149,700	67,904	207,400	94,077
	40	12.19	61.5	97,700	44,317	136,600	61,962
	50	15.24	51.6	71,300	32,342	100,600	45,632
	70	21.34	24.2	44,300	20,094	63,900	28,985
120' (36.58m)	25	7.62	81.2	201,000	91,174	271,700*	123,243*
	40	12.19	73.9	97,300	44,135	136,100	61,735
	60	18.29	63.6	54,600	24,767	78,200	35,472
	80	24.38	52.3	36,100	16,375	52,800	23,950
	100	30.48	38.7	25,600	11,612	38,800	17,600
	120	36.58	18.3	18,800	8,528	29,600	13,427
200' (60.96m)	35	10.67	81.9	117,200	53,162	163,400	74,118
	60	18.29	74.5	52,200	23,678	75,900	34,428
	100	30.48	62.2	23,000	10,433	36,200	16,420
	130	39.62	51.9	13,600	6,169	23,500	10,660
	160	48.77	39.8	8,000	3,629	15,900	7,212
	200	60.96	14.1	3,100	1,406	9,400	4,264
220' (67.06m)	40	12.19	81.3	94,800	43,001	133,800	60,692
	60	18.29	76.0	51,400	23,315	75,000	34,020
	100	30.48	64.9	22,100	10,025	35,300	16,012
	140	42.67	52.7	10,600	4,808	19,700	8,936
	180	54.86	37.9	4,400	1,996	11,400	5,171
	220	67.06	13.4	500	227	6,200	2,812

Standard heavy duty open throat boom 85' (2.16m) deep x 100" (2.54m) wide							
Boom length	Load radius		Boom angle	"A" counterweight		"AB" counterweight	
	Feet	Meters		Pounds	Kgs.	Pounds	Kgs.
250' (76.2m)	50	15.24	80.0	66,700	30,255	95,600	43,364
	80	24.38	73.0	31,500	14,288	47,900	21,727
	140	42.67	57.7	9,200	4,173	18,300	8,301
	160	48.77	52.1	5,700	2,586	13,600	6,169
	180	54.86	46.0	3,000	1,361	10,000	4,536
	200	60.96	39.2	900	408	7,200	3,266
270' (82.3m)	50	15.24	80.8	—	—	94,800	43,001
	100	30.48	69.8	—	—	33,000	14,969
	160	48.77	55.4	—	—	12,600	5,715
	220	67.06	37.7	—	—	3,900	1,769
	240	73.15	30.0	—	—	2,000	907
	260	79.25	19.9	—	—	300	136
280' (85.34m)	50	15.24	81.1	—	—	94,300	42,774
	100	30.48	70.5	—	—	32,600	14,787
	180	54.86	51.7	—	—	8,600	3,901
	200	60.96	46.3	—	—	5,700	2,586
	220	67.06	40.3	—	—	3,400	1,542
	240	73.15	33.4	—	—	1,500	680
290' (88.39m)	50	15.24	81.4	—	—	93,900	42,593
	100	30.48	71.2	—	—	32,100	14,561
	140	42.67	62.6	—	—	16,400	7,439
	180	54.86	53.3	—	—	8,100	3,674
	220	67.06	42.6	—	—	2,900	1,315
	240	73.15	36.3	—	—	1,000	454

*Capacities limited by strength of materials.

We are constantly improving our products and therefore reserve the right to change designs and specifications.

FMC Corporation Crane and Excavator Division World Headquarters Cedar Rapids Iowa 52406

Plants in: Cedar Rapids Iowa (2) • Lexington & Bowling Green Kentucky • Ontario Canada • Milan Italy • Queretaro Mexico & Nagoya Japan (under license)