

The new 100-tonner with highlights offered by Liebherr.



6-section, 52 m long telescopic boom for 52 m height under hook



biparted, 10.8 m - 19 m long swing-away jib for 72 m height under hook, mountable at 0°, 20° or 40°



11.4 t safe working load on the 52 m long telescopic boom (with 35 t counterweight)



oviform, extremely rigid boom profile for high lifting capacities



proved rapid-cycle telescoping system "Telematik" for the automatic extension of the boom to the desired length



high lifting capacities with 35 t total counterweight, rapid ballasting procedure with "keyhole" system



electrically pilot-controlled load sensing system, 4 superimposable working motions, working speeds preselectable by steps



comfortable crane cab, tiltable backwards by 20°



self-manufactured hoist winches with 88 kN line pull and 130 m/min line speed



LICCON system - a Liebherr design - the most modern, programmable computer system world-wide for the control and monitoring of mobile cranes



outstandingly compact, 5-axle carrier with 10 x 8 drive (optional) and 4 axles steered



operative weight 60 t (5 x 12 t axle load) incl. 11 t - 15 t counterweight



"Niveaumatik", the crane and road preserving suspension system



electric and electronic components interlinked by the most modern data bus transmission technique which distinctively contributes to an increase in functionality and efficiency (LSB = Liebherr System Bus)



for the carrier drive: Liebherr turbo-charged Diesel engine of 400 kW output, exhaust emission acc. to EURO 3, ZF 16-speed gear box with AS-TRONIC

for the crane drive: Liebherr turbo-charged Diesel engine of 149 kW output



driving cab with ergonomical cockpit and functional design

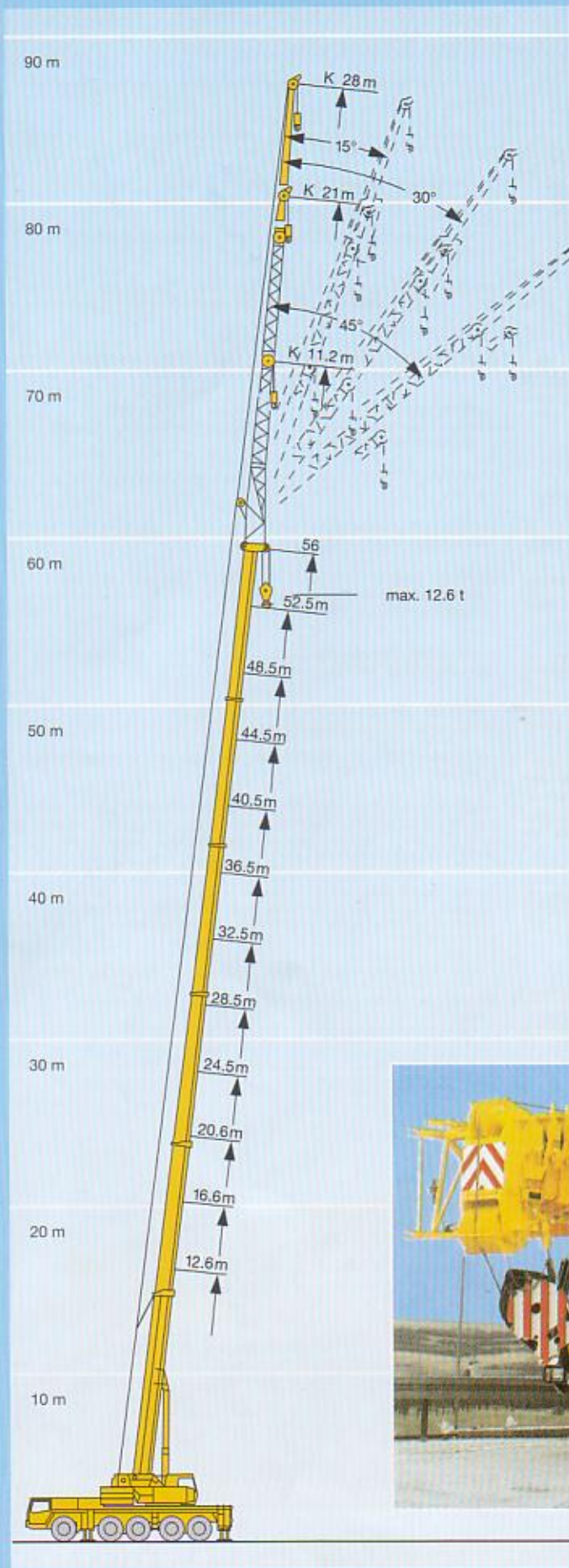


Mobile crane type Typ LTM 1100/2

scopes - a module of the successful

The 120-tonner with highlights offered by Liebherr.

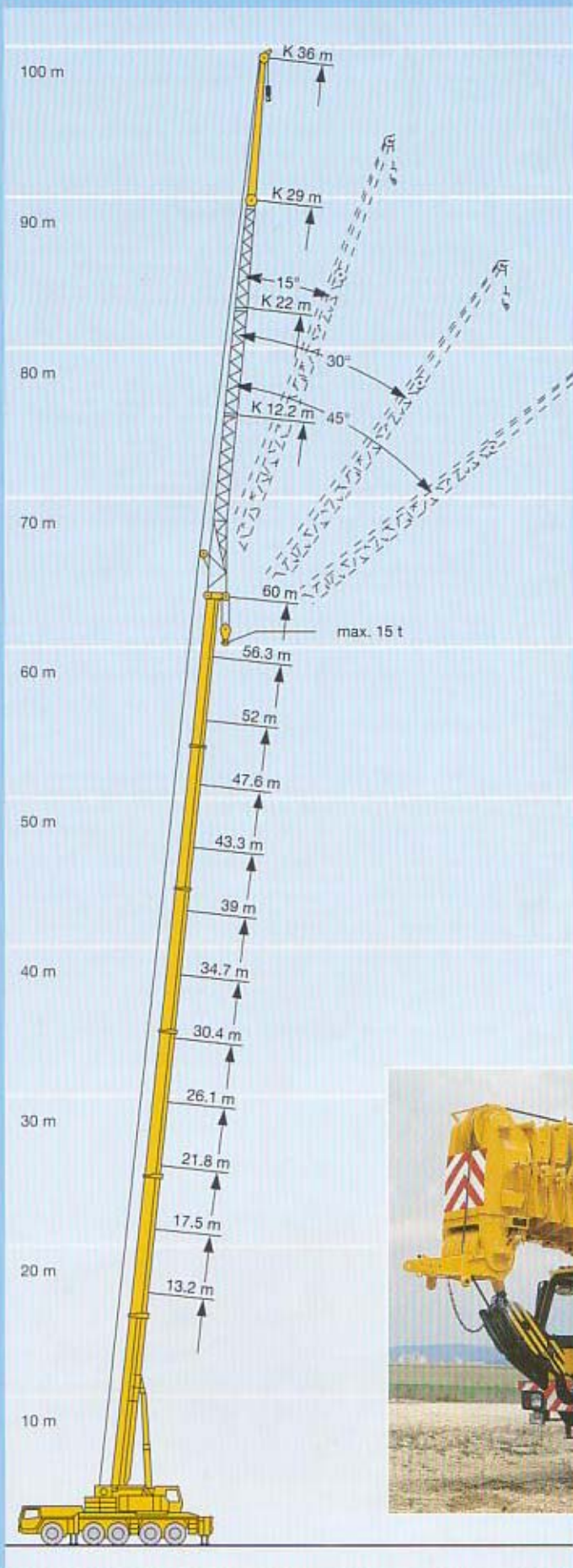
-  6-section, 56 m long telescopic boom for 56 m height under hook
-  3-section, 11.2 - 28 m long swing-away jib for 84 m height under hook, mountable at 0°, 15°, 30° or 45°
-  12.6 t safe working load on the 56 m long telescopic boom
-  oviform, extremely rigid boom profile for high lifting capacities
-  proved rapid-cycle telescoping system "Telematik" for the automatic extension of the boom to the desired length
-  variable application spectrum with 35 t, 25 t, 15 t or 7 t counterweight
-  electrically pilot-controlled load sensing system, 4 superimposable working motions, working speeds preselectable by steps
-  comfortable crane cab, tiltable backwards by 20°
-  LICCON system - a Liebherr design - the most modern, programmable computer system world-wide for the control and monitoring of mobile cranes
-  extremely compact, 5-axle carrier with all-wheel steering
-  operative weight 60 t (5 x 12 t axle load), incl. 7 t counterweight
-  "Niveaumatik", the crane and road preserving suspension system
-  variable supporting basis with LICCON supporting force indication and inclinometer (optional)
-  for the carrier drive:
Liebherr turbo-charged Diesel engine of 400 kW output, exhaust emission acc. to EURO 2,
Allison automatic transmission
-  for the crane drive:
Liebherr turbo-charged Diesel engine of 120 kW output
-  driving cab with ergonomical cockpit and functional design



Mobile crane type LTM 1120/1

The "Telematik" system - the fully aut with the LICCON computer.

The 160-tonner with highlights offered by Liebherr.



-  6-section, 60 m long telescopic boom for 60 m height under hook
-  4-section, 12.2 - 36 m long swing-away jib for 96 m high under hook, mountable at 0°, 15°, 30° or 45°
-  15 t or 13.9 t safe working load on the 60 m long telescopic boom (with 50 t / 0 t counterweight)
-  oviform, extremely rigid boom profile for high lifting capacities
-  proved rapid-cycle telescoping system "Telematik" for the automatic extension of the boom to the desired length
-  variable application spectrum with 50 t, 35 t, 23 t, 11 t or 0 t counterweight
-  diesel-hydraulic crane drive with 2 variable displacement pumps, closed oil circuits for hoist gear and slewing gear, open oil circuits for luffing and telescoping, electronic crane control
-  comfortable crane cab, tiltable backwards by 20°
-  LICCON system - a Liebherr design - the most modern, programmable computer system world-wide for the control and monitoring of mobile cranes
-  extremely compact, 5-axle carrier with all-wheel steering
-  operative weight 60 t (5 x 12 t axle load)
-  "Niveaumatik", the crane and road preserving suspension system
-  variable supporting basis with LICCON supporting force indication and inclinometer (optional)
-  or the carrier drive:
Liebherr turbo-charged Diesel engine of 400 kW output, exhaust emission acc. to EURO 2,
Allison automatic transmission for the crane drive:
Liebherr turbo-charged Diesel engine of 120 kW output
-  driving cab with ergonomical cockpit and functional design



Mobile crane type Typ LTM 1160/2

omatic telescope control

The new 300-tonner with highlights offered by Liebherr.



5-section, 60 m long telescopic boom for 60 m height under hook



31 t safe working load on the 60 m long telescopic boom



21 m long biparted swing-away jib, 10.5 m - 70 m long, fixed or luffing jib, auxiliary jibs also in conjunction with the guyed telescopic boom for increased lifting capacity



optimized, oviform boom profile with continuous curvature of the lower shell, improved buckling resistance, particular high stability, also in the lateral neutral axis, extremely torsion-resistant system, particularly designed for long auxiliary jibs



proved rapid-cycle telescoping system "Telematik" for the automatic extension of the boom to the desired length



variable application spectrum with 112.5, 87.5, 75 t, 50 or 25 t counterweight, hoist gear 2 and 3 pinned to the counterweight base frame, very easy mounting procedure



diesel-hydraulic crane drive with 3/4 variable displacement pumps, closed oil circuits for hoist gear, slewing gear and jib luffing winch, open oil circuits for luffing and telescoping, electronic crane control



spacious, comfortable crane cab, tiltable backwards by 20°, modern interior design, crane cab is swivelled to the rear for road transport



up to 3 self-manufactured hoist winches of 105 kN line pull and 130 m/min rope speed



LICCON computer system with new high-performance central unit (32 bit computer)



compact, 6-axle carrier, variable drive/steering concept 12 x 8 x 10 (optional)



operative weight 72 t (6 x 12 t axle load)



"Niveaumatik", the crane and road preserving suspension system, fully automatic levelling of the crane during the supporting procedure by means of push-button control



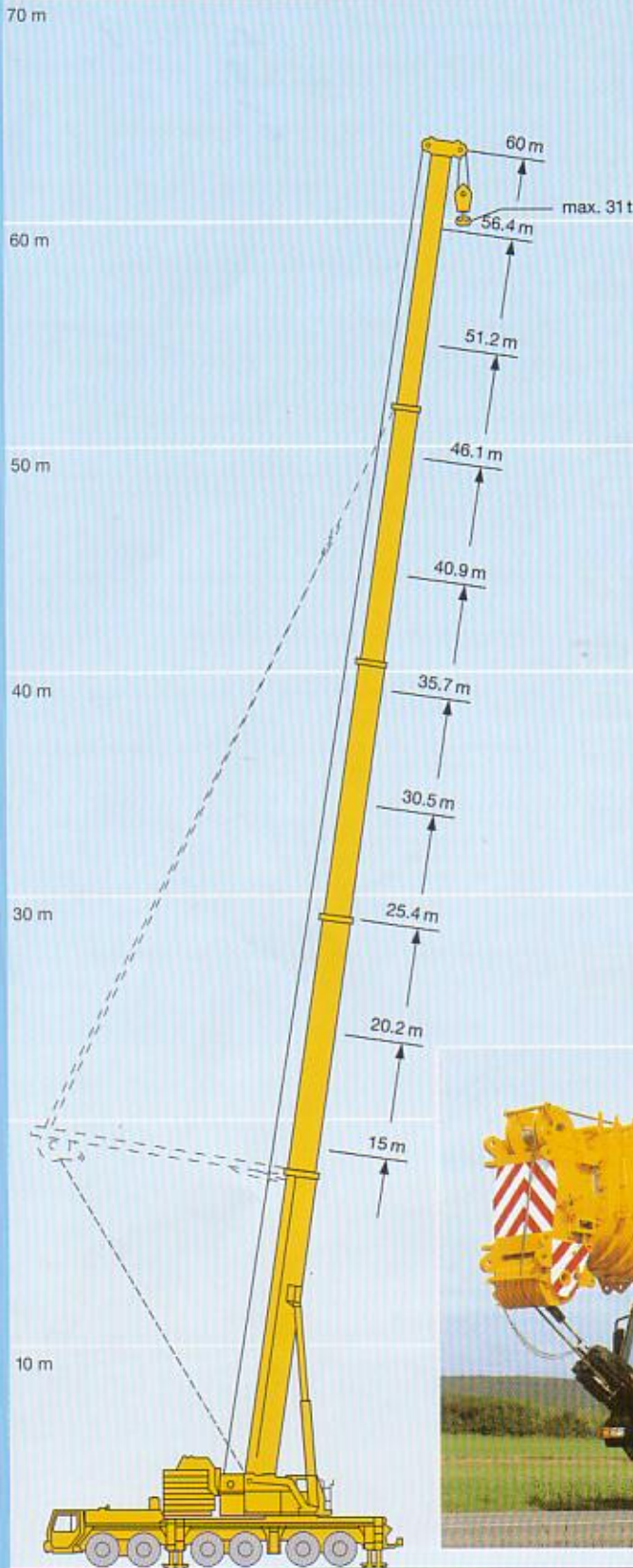
interlinkage of the electric and electronic components of the carrier and crane by most modern data bus transfer technique (LSB = Liebherr System Bus), distinctive increase of functionality and efficiency



for the carrier drive Liebherr turbo-charged Diesel engine of 440 kW output, exhaust emission acc. to EURO 2, electronic engine management with data bus technique, Allison automatic transmission with electronic transmission management for the crane drive: Liebherr turbo-charged Diesel engine of 180 kW output (IMO 1), installed crossways to the driving direction, electronic engine management by data bus technique

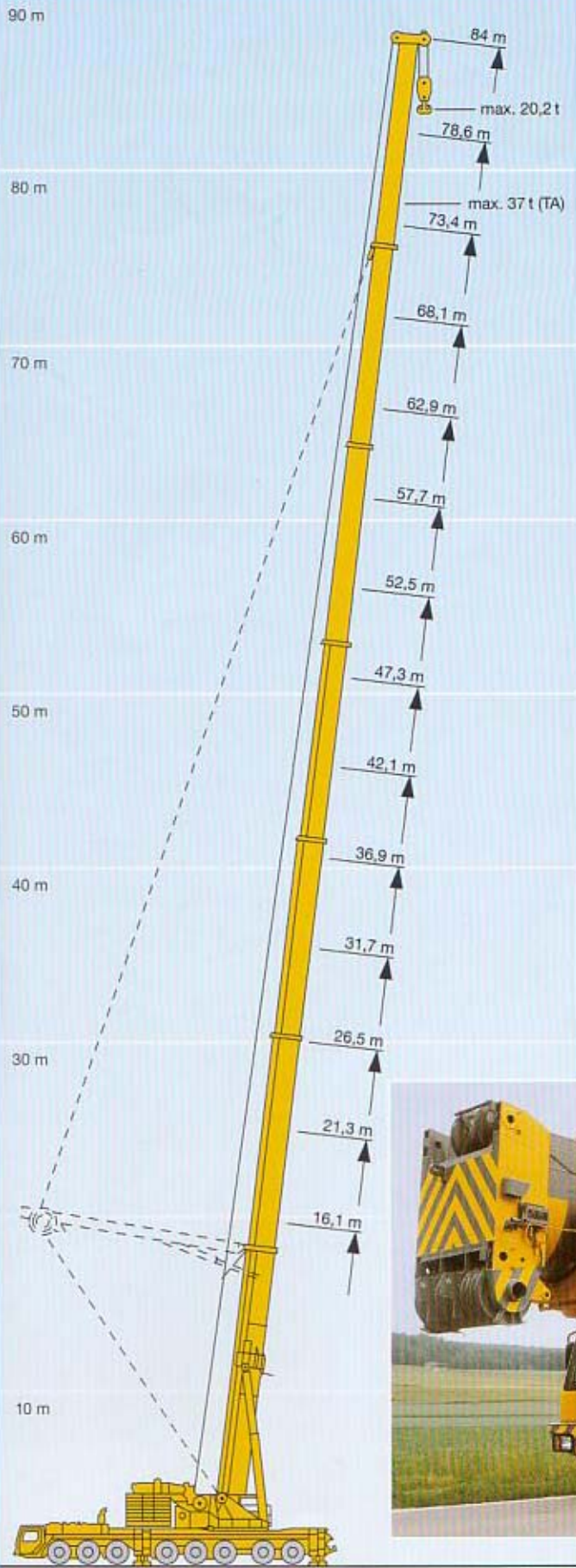


driving cab with ergonomical and functional design






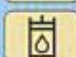















Mobile crane type LTM 1300/1

Innovative crane operator's cabin of o and aesthetics.



The 500-tonner with highlights offered by Liebherr.

-  7-section, 84 m long telescopic boom for 84 m height under hook
-  4-section, 50 m long telescopic boom for 50 m height under hook
-  fixed or luffing jib of 14 m - 91 m, also in conjunction with the guyed telescopic boom for increased lifting capacity, max. under-hook height 140 m
-  20.2 t safe working load on the 84 m long telescopic boom
-  37 t safe working load on the 78.6 m long, guyed telescopic boom
-  oviform, wide boom profile of outstanding stability, also in the neutral axis; system of extreme torsional rigidity, particularly designed for long auxiliary jibs, internal interlocking system of telescopes
-  proved rapid-cycle telescoping system "Telematik" for the automatic extension of the boom to the desired length
-  variable application spectrum with 180 t, 150 t, 120 t, 90 t, 60 t or 30 t counterweight
-  diesel-hydraulic crane drive with 8 variable displacement pumps, electronic control, closed oil circuits for hoist gear, slewing gear and jib luffing winch, open oil circuits for luffing and telescoping
-  spacious, comfortable crane cab with new interior design, tiltable backwards by 20°, the crane cab must be swivelled to the rear for road transport
-  3 self-manufactured hoist winches of 126 kN linepull and 130 or 145 m/min rope speed
-  LICCON system - a Liebherr design - the most modern, programmable computer system world-wide for the control and monitoring of mobile cranes
-  compact, 8-axle carrier, drive/steering 16 x 8 x 14 (optional)
-  operative weight 96 t (8 x 12 t axle load), incl. 50 m long telescopic boom
-  "Niveaumatik", the crane and road preserving suspension system
-  interlinkage of the electric and electronic components of the carrier and superstructure by modern data bus transfer technique (LSB = Liebherr System Bus), distinctive increase of functionality and efficiency
-  for the carrier drive: Liebherr turbo-charged Diesel engine of 440 kW output, exhaust emission acc. to EURO 2, electronic engine management with data bus technique
-  for the crane drive: Liebherr turbo-charged Diesel engine of 240 kW output, electronic engine management by data bus technique
-  driving cab with ergonomical and functional design



Mobile crane type LTM 1500

utstanding functionality