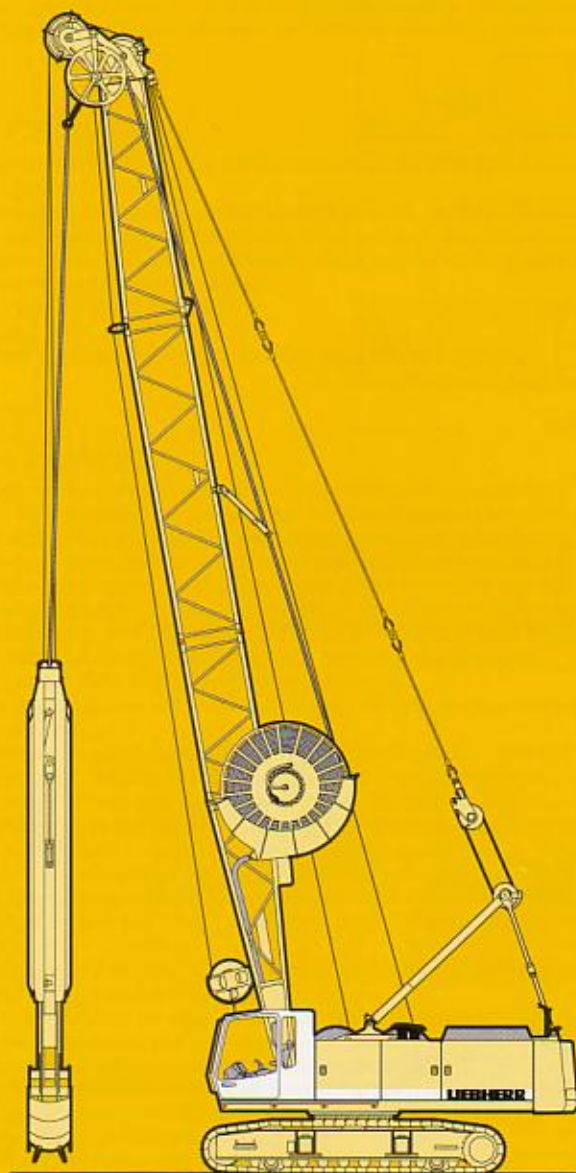


**Technical Data**  
**Hydraulic crawler crane**

**HS 843 HD**  
Litronic®

**with Hydraulic Diaphragm-Wall Grab**



**LIEBHERR**

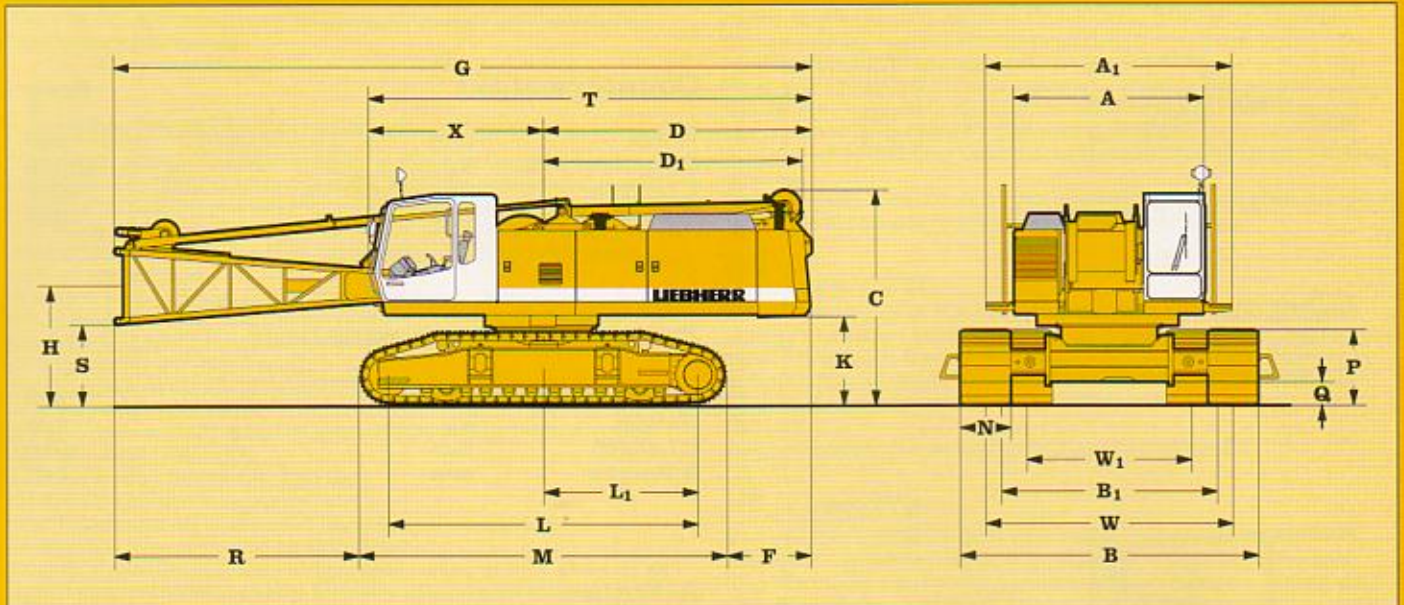
The Better Machine.

# Technical Data Hydraulic crawler crane

# HS 843 HD

Litronic®

## Basic machine with undercarriage



### Dimensions

Dimensions	mm	mm
A Width of superstructure	3000	X Distance from centre of rotation to end of cab 2750
A <sub>1</sub> Width of superstructure with walk way	3440	N Width of track shoes 700 800 900 1000
C Height of basic machine	3250	W <sub>1</sub> Track width retracted 2400 2400 2600 2600
D Tail reach	4230	W Track width extended 3850 3850 3850 3850
Tail swing radius	4260	B Crawler width extended 4550 4650 4750 4850
D <sub>1</sub> Tail reach A-frame	4070	B <sub>1</sub> Crawler width retracted 3500 3500 3700 3700
F Distance between rear end of crawler and outside of counterweight	1320	
G Overall length of superstructure with lowered A-frame	11000	
H Ground clearance of boom foot pivot	1740	
K Ground clearance of superstructure	1240	
L Wheel base (centre idler to centre tumbler)	4800	
L <sub>1</sub> Distance from centre of rotation to centre of tumbler	2400	
M Length of crawlers	5760	
P Height of crawlers	1040	
Q Ground clearance of crawler	375	
R Distance from edge of horizontal boom foot to crawler	3900	
S Ground clearance of horizontal boom foot	1130	
T Length of superstructure	6980	

### Operating Weight and Ground Pressure

The operating weights include the basic unit with B6 crawler tracks, 2 main winches 20 t and 11 m boom, consisting of A-frame, boom foot (5.5 m), boom head (5.5 m) and 12.3 t counterweight.

All systems are ready.

with 700 mm flat track shoes	55.0 t - 0.80 kg/cm <sup>2</sup>
with 800 mm flat track shoes	55.6 t - 0.71 kg/cm <sup>2</sup>
with 900 mm flat track shoes	56.2 t - 0.64 kg/cm <sup>2</sup>
with 1000 mm flat track shoes	56.8 t - 0.58 kg/cm <sup>2</sup>
with 700 mm 3-web shoes	53.0 t - 0.77 kg/cm <sup>2</sup>
with 800 mm 3-web shoes	53.5 t - 0.68 kg/cm <sup>2</sup>
with 900 mm 3-web shoes	54.0 t - 0.61 kg/cm <sup>2</sup>
with 1000 mm 3-web shoes	54.5 t - 0.55 kg/cm <sup>2</sup>

# LIEBHERR

The Better Machine