

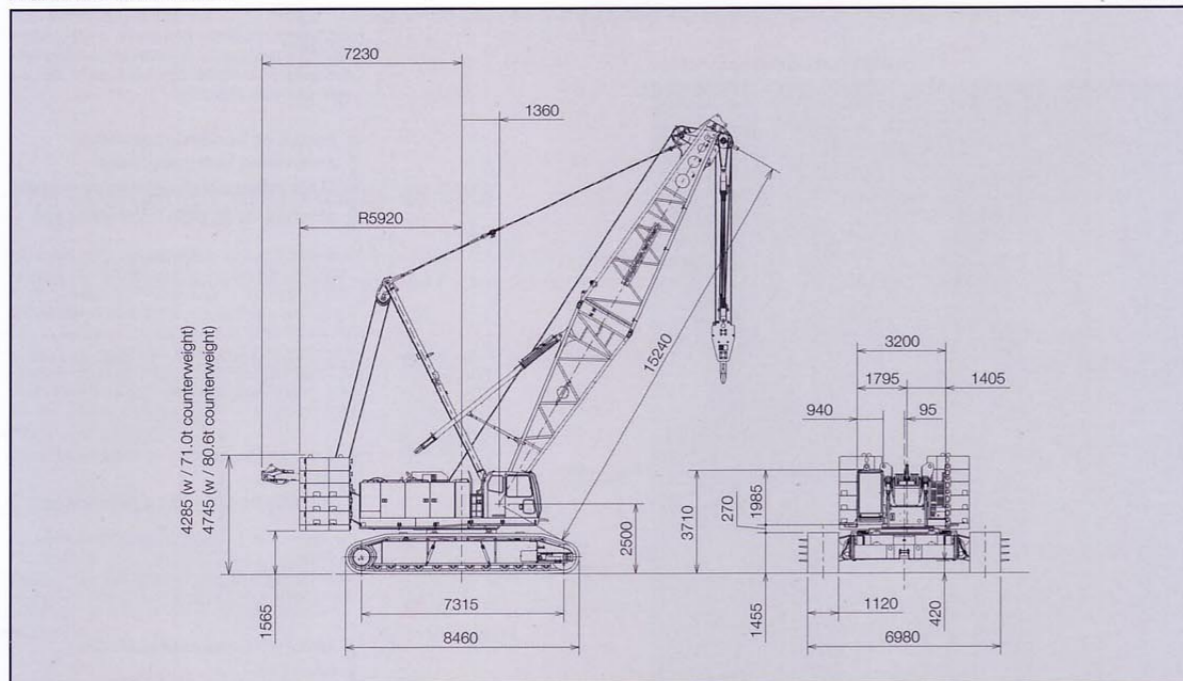
SCX2000A-2

HITACHI SUMITOMO

SCX2000A-2

■ GENERAL DIMENSIONS

Unit : mm



■ SPECIFICATIONS

		Liftcrane application
Max. lifting Capacity	t × m	200 × 4.6
Basic boom length	m	15.2
Max. boom length	m	85.4
Fly jib length	m	12.2 ~ 30.5
Boom + fly jib length	m	73.2 + 30.5
Front / Rear main drum rope line speed*	m / min	*110 / 110
Boom hoist rope line speed*	m / min	32 × 2
Swing speed*	min ⁻¹ (rpm)	1.7 (1.7)
Travel speed* high / low	km / h	1.2 / 0.6
Gradeability	% (°)	30 (17)
Make & model		Mitsubishi 6M70-TL
Rated output*	kW / min ⁻¹ (PS / rpm)	272 / 2000 (370 / 2000) *1)
Ground contact pressure	kPa (kgf / cm ²)	Approx. 111 (1.13) (w / basic boom and 200t hook block, 71.0t counterweight) Approx. 117 (1.20) (w / 18.3m boom and 200t hook block, 80.6t counterweight)
Operating weight	t	Approx. 186 (w / basic boom and 200t hook block, 71.0t counterweight) Approx. 196 (w / 18.3m boom and 200t hook block, 80.6t counterweight)

* Varies with the load.

- We are constantly improving our products and therefore reserve the right to change designs and specifications without notice.
- The images used in this catalog may differ from those of the machine acquired with the sales specifications.
- These images are photographed having conducted scene directions.
- When leaving the machine, ensure safety by always setting a work device or by other measures.

- The colors of the images on this catalog may differ from actual colors due to the printing process.
- Before using this machine, be sure to read the operator's manual.
- When operating transportable cranes with lifting loads of 5t or more, the qualification of a "driving license for transportable cranes" is required.
- Also, only individuals with an applicable operational qualification or training certificate may use the machine except for craning purpose.

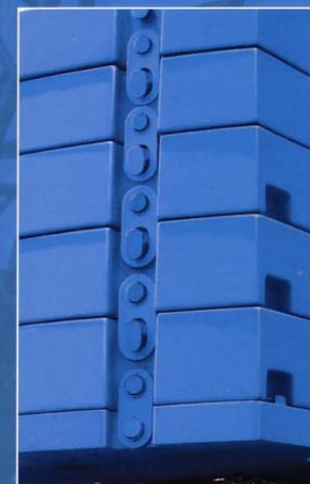
Address inquires to :

Hitachi Sumitomo Heavy Industries Construction Crane Co., Ltd.

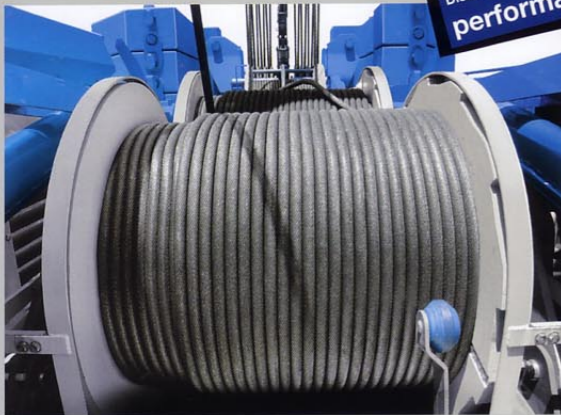
9-3, Higashi Ueno 6-chome, Taito-ku, Tokyo 110-0015, Japan
Phone: 81-3-3845-1387 Facsimile: 81-3-3845-1394
<http://www.hsc-crane.com>

Printed in Japan
0911 ©05H.EA158

SCX2000A-2



Discover its higher performance



“High line pull” available for superior lifting performance **245kN**

By combining the high-output engine and EPC system, a 245kN (25t) high line pull winch for both front and rear drums is realized, which surely provides superior lifting performance.

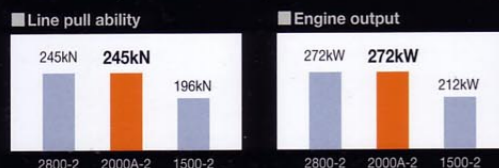
Ascertained workability realized by the “rope line speed” **110m/min**

The maximum rope line speed is 110m/min efficiently facilitating even high lift working; moreover, a freefall-less winch is equipped as standard along with sufficient safety considerations.

Achieving high work efficiency by “wide drum” **58m**

Front and rear drums have 28mm wire rope and its capacity at the first layer is 58m with 30 wraps. These wire drums reduce the deshelled layering and wear of the wire rope to the absolute minimum, not only extending the wire life but also enhancing operational efficiency during crane and luffing operations.

A high lifting ability exceeding that of 150t class machines and with power equivalent to 275t class machines



The maximum lifting ability is 200t x 4.6m, improved by 33% compared with our conventional 150t class machines. The engine rated output is 272kW, realizing a level of performance equivalent to that of the engine adopted to our 275t class machines. Stable operations are therefore achieved.

A concept to select a 200t class machine

The power and capacity can alter conventional concept within the class

Although the machine size is almost the same as the 180t class machines, an excellent performance equivalent to that of the 250t class machines is achieved (compared to our conventional machines). In addition, effort has been applied to the details of the machine used for its functional ability of assembling/disassembling and those to secure safety, that were available for the upper class models, have been adopted to design of the machine. Efficiency is substantially improved by ensuring a comfortable and safe operational environment while inheriting the highly-reputed durability and visibility from higher class models realizing a reliable partner machine.



SCX2000A-2

[Maximum rated load]
Crane specification: 200t x 4.6m

“A high output engine” equivalent to 275t class machines **272kW**

A high output engine generating 272kW (370PS) equivalent to the 275t class engine is equipped. Its ample output setting supports the machine's superior lifting performance.

Qualifying to present-day environmental standards

Conforming to European exhaust gas emission regulations

By equipping with a low pollution engine, emissions of nitrogen oxide (NOx) and particulate matter (PM), etc. are reduced to an absolute minimum. This ensures compliance with the “Tier III emission regulations” effective in North America, Europe, and Japan.

The use of hazardous substances is controlled with due consideration

Based on Hitachi Construction Machinery's strict and unique environment management program, the SCX2000A-2 has been created not only by adopting lead-free aluminum radiators, oil coolers and intercoolers, etc. but also by pursuing efforts to achieve guaranteed safety of materials, structure, segregation and disposal.

Achieving a 99% recycling rate (by weight)

The counterweights comprising 30% of the total machine weight are made of castings. In addition, a 99% recycling rate is achieved relative to the material weight.

* The image includes optional specifications.