



**FVELLE**  
**FAVCO**

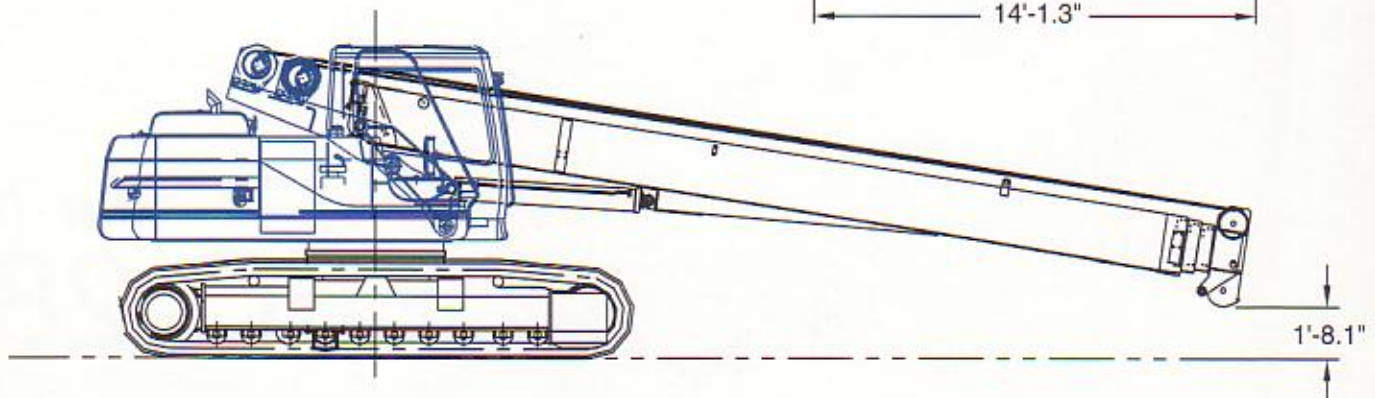
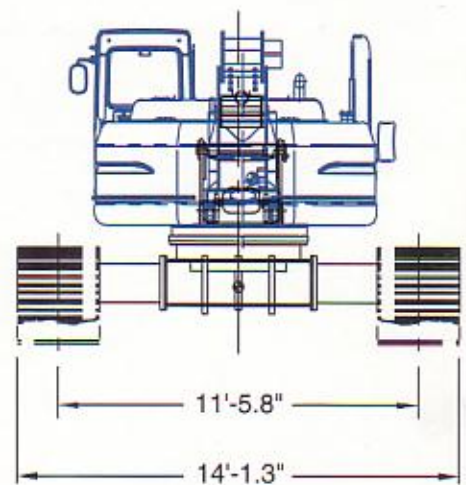
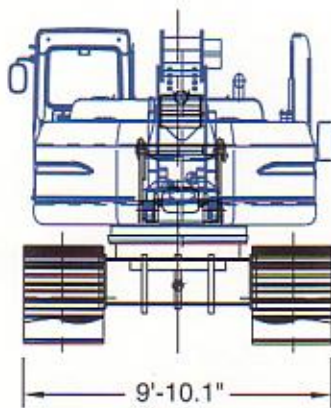
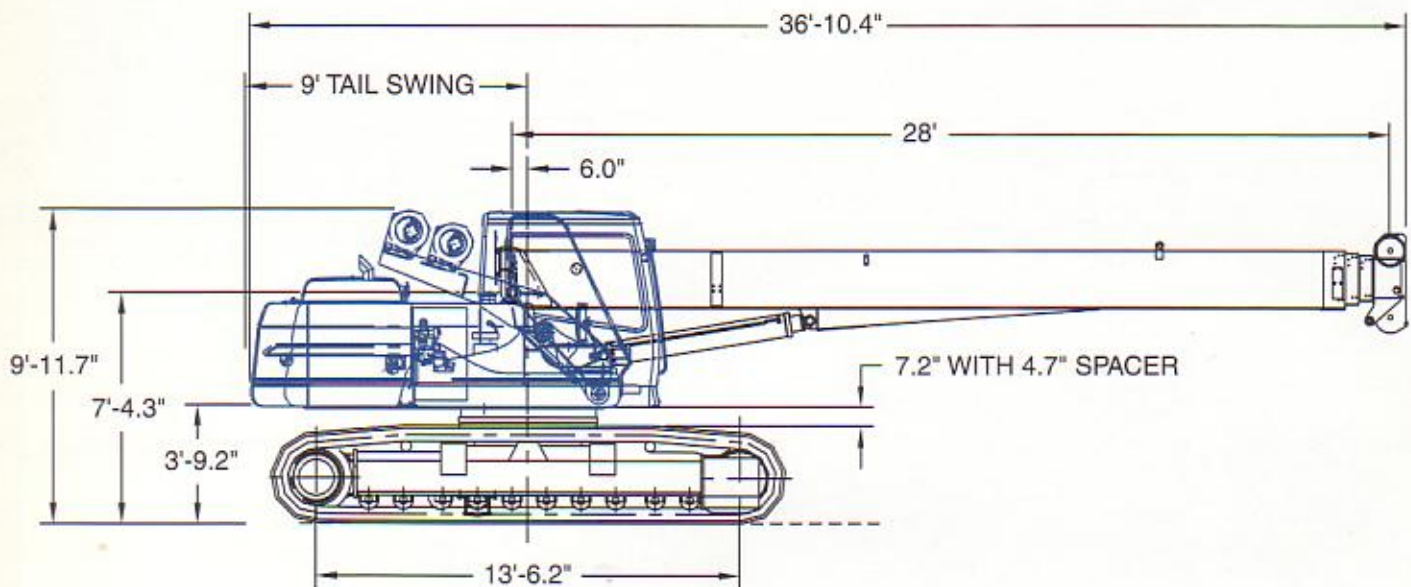
The Cranemakers

<http://www.hydro-crane.com/>

*The New*  
**FFC 28T**

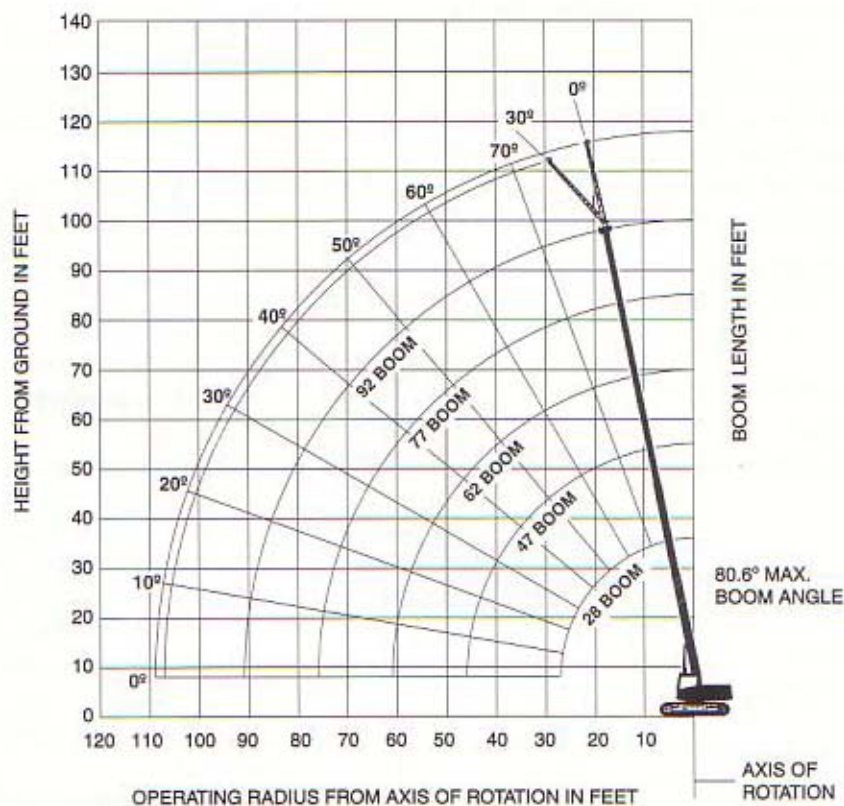


# Dimensions



# Range

**WORKING RANGE DIAGRAM** (Boom Deflection Not Shown)



# Load

**28 TON PRELIMINARY LOAD CHART** (0-2 DEGREE SLOPE)

360 Degree Capacities in pounds

Radius in Feet	28 feet	47 feet	62 feet	77 feet	92 feet
5	56,000				
8	45,800				
10	41,400	20,500			
12	36,280	20,500	18,500		
15	29,830	20,500	17,150	13,100	
20	22,080	19,750	15,500	12,000	9,180
25	15,560	15,910	13,650	11,000	8,430
30		12,080	11,650	9,710	7,670
35		9,550	9,660	8,620	6,900
40		7,760	7,870	7,810	6,230
45		6,410	6,530	6,590	5,620
50			5,490	5,550	5,090
55			4,670	4,730	4,540
60			3,980	4,050	4,000
65				3,490	3,530
70				3,020	3,060
75				2,600	2,650
80					2,300
85					1,990
90					1,710

**Note:** When using auxillary boom head, loads are limited to the above AND maximum single part line pull of 8,500 pounds for 9/16" 6 x 25 IWRC wire rope or 7,400 pounds for 9/16" Rotation Resistant wire rope. Only single part reeving is allowed.



# Specifications

## Boom

28 ft. – 92 ft. (8.53 m – 28.04 m) 4 section telescoping type, extended and retracted proportionally by double-acting hydraulic cylinder and cable crowd system.  
Maximum Tip Height: 98 ft. (29.87 m)

## Boom Point

Four high-density nylon sheaves mounted in heavy-duty roller bearings. Two removable pin-type rope guards.

## Boom Elevation

Double-acting hydraulic cylinder. Working range from 9° below to 80.6° above horizontal is achievable in 45 seconds at maximum operating speeds.

## Wire Rope

420 ft. (128 m) of 9/16 in. (14.3 mm) diameter rotation resistant wire rope supplied with standard unit [9/16 in. 6 x 25 EIPS IWRC optional].

## Main Load Block

30-Ton (27 mt) capacity block with heavy-duty hook; sufficient weight provided for multi-line operation.

## Auxiliary Load Block [optional]

5-Ton overhaul ball.

## Main and Auxiliary Hoist Specifications

Planetary winch system powered by a high efficiency motor for smooth service: anti-friction bearings, fully automatic, spring applied, hydraulically released safety brake.

Braden Model PD12C, two speed motor.

## Maximum single line speed

Bottom Layer	229 FPM (70 m/min.)
Intermediate Layer	280 FPM (85 m/min.)
Top Layer	305 FPM (93 m/min.)

## [High speed option]

Bottom Layer	319 FPM (97 m/min.)
Intermediate Layer	390 FPM (119 m/min.)
Top Layer	426 FPM (130 m/min.)

## Maximum single line winch pull

Bottom Layer	10,560 lbs (4,800 kg)
Intermediate Layer	8,630 lbs (3,923 kg)
Top Layer	7,910 lbs (3,595 kg)

## Maximum permissible line pull

9/16 in. (14.3 mm) rotation resistant	7,400 lbs (3,364 kg)
9/16 in. (14.3 mm) 6 x 25 EIPS IWRC	8,500 lbs (3,864 kg)

Maximum rope stowage ..... 427 ft. (130 m)  
9/16 in. (14.3 mm)

## Swing

360° continuous rotation, hydrostatic independent planetary reduction. Mechanism driven by a pinion gear sealed in a

grease bath through a double reduction planetary gear set.  
SKF heavy-duty swing bearings.  
Maximum speed: 3 RPM

## Hydraulic System

Caterpillar hydraulics with hydraulic cross-sensing system:

## Pumps

- 100% of engine horsepower deliverable as hydraulic power.
- Full power to a single motor for strong, fast turns
- Balanced power to two pumps for straight travel.
- Combined capacity ..... 97.8 GPM (370 LPM)
- Maximum operating pressure:
  - Travel ..... 4,975 psi (350 bar)
  - Implements ..... 4,550 psi (320 bar)

Reservoir ..... 2 x 36 gallon (2x136 liters)

## Engine

Caterpillar 3066T, 6.4 L six cylinder, water-cooled, turbo-charged, diesel. 128 hp (96 kW) @ 1800 RPM.

Fuel Tank Capacity ..... 82 gallons (310 liters)

## Cab

Quiet Caterpillar work station with ergonomic seat design. Excellent viewing area through large wide windows and a large push-open skylight for upward visibility. Highly efficient ventilation with automatic climate control.

## Valves

Caterpillar 320 Standard 8 bank guide panel. Strategically located sample ports for oil and pressure checks.

## Load Moment Indicator

Robway LMI and anti-two block system, providing an electronic display of boom angle, length, radius, tip height, actual load and rated capacity. Audible and visual alarms. Hydraulic control lockout and function cut-off. Data logging.

## Undercarriage

Caterpillar designed and built, hydraulically activated, variable gauge frame. Welded pentagonal track roller frames and hydraulic adjusters. Sealed and lubricated rollers and idlers. Sealed track with triple-grouser shoes.

## Crawler Drive System

Hand or foot actuated travel controls. Fully hydrostatic system. Each track is driven by one independent, automatic shifting, two-speed axial piston motor via integral planetary final drives.

## Maximum Speed

- 2.4 MPH (3.86 kph) on site travel, boom retracted.
- 1.23 MPH (1.98 kph) pick and carry mode with less than 60 ft. of boom extended.
- 0.5 MPH (0.8 kph) pick and carry mode with more than 60 ft. of boom extended.

Maximum Gradeability ..... 30%



Gross Vehicle Weight ..... 68,140 lbs (30,908 kg)

## Warranty

6 month warranty with unlimited hours covers parts and labor resulting from defects in material and workmanship. The global networks of Favelle Favco Cranes and Caterpillar dealers ensure warranty and parts and service support worldwide. Extended warranty plan is available.

## Standard Equipment

- Air conditioning.
- Alternator, 50-amp.
- Automatic engine control.
- Automatic swing brake.
- Cab, sound-suppressed, includes:
  - Ash tray.
  - Cigar lighter.
  - Coat hook.
  - Compartments:
    - Literature.
    - Storage, lunch box.
    - Small tray on console.
  - Drink holder.
  - Floor mat.
  - Handrails.
  - Heater with defroster.
  - Horn, signaling/warning.
  - Hydraulic starter systems lock lever.
  - Instrument panel with LCD gauges.
  - Lights, interior.
  - Joysticks, pilot-operated, adjustable.
  - Seat belt, retractable.
  - Seat, four-way adjustable suspension with arm rests.
  - Skylight, opening.
  - Travel controls, pedals with removable levers.
  - Ventilation, positive-filtered.
- Windows:
  - Windshield, upper retractable, laminated safety glass.
  - Windshield, lower removable, clear, tempered safety glass.
  - Cab door window, sliding clear, tempered safety glass.
  - All other windows are tempered safety glass.
- Electronic power unit control with back-up system.
- Engine, Cat 3066T.
- Hydraulic valve port for auxiliary equipment.
- Hydraulic tank, additional.
- Heavy duty hydraulic oil cooler.
- Lights, working: frame mounted.
- Locks, door and cap, one-key system.
- Mirrors:
  - Right side.
  - Cab.
- Power mode selector, with memory function.
- Steps.

- Straight travel circuit.
- Tow eyes.
- Track guiding guards, center.
- Travel, two-speed with automatic shift.

## Optional Equipment

- Alarm, travel with on-off switch.
- Booms:
  - Auxiliary boom point for single line application.
  - Five ton hook ball.
  - 20 ft. (6.096 m) tubular construction jib with 0°, 15° and 30° offset settings.
- Cab:
  - Cab with polycarbonate windows right side, rear and lower left side. Bosses for vandalism protection guard. Radio mount including wires, 24- to 12-volt converter and antenna.
  - Cab with radio mount and front window bosses for vandalism guard.
  - Hi-rise cab.
- Cab riser.
- Cooling system, high ambient.
- Dozer blade.
- Fine swing control.
- Free fall, controlled.
- Fuel tank, for an additional 10 hours.
- Guards:
  - Heavy duty, bottom.
  - Additional sections for track guiding guards.
    - Sprocket end.
    - Idle end.
  - Vandalism protection for optional cab.
  - Windshield.
- Joysticks, electronic controlled.
- Lights: cab mounted.
- Motor, two speed on hoisting with automatic shift.
- Rain protection shade.
- Refueling pump, electric.
- Seat, KAB 414.
- Seat head rest.
- Starting aid, cold weather.
- Sun visors:
  - Window visor.
  - Skylight visor with holding brackets.
- Tool kit through Parts Department.
- Track shoes:
  - Single grouser ..... 24 in. (600 mm)
  - Double Grouser ..... 28 in. (700 mm)
  - Self Cleaning (LGP pad) ..... 32 in. (800 mm)
- Water separator.
- Windshield wiper, lower.

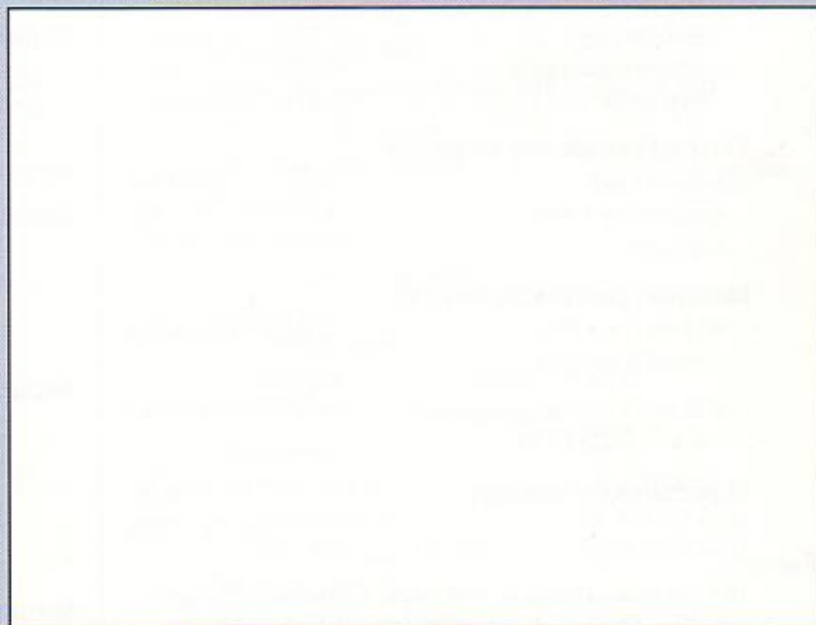




**FAVELLE  
FAVCO**

Favelle Favco Cranes (USA) Inc.  
P.O. Box 3049  
Port of Harlingen  
Harlingen, TX 78551-3049  
USA  
Tel: 956-428-7488  
Fax: 956-428-7749  
Toll-free: 888-658-8808  
[www.favcousa.com](http://www.favcousa.com)

Constant improvement and engineering progress make it necessary that we reserve the right to make specifications, equipment, and price changes without notice. Illustrations shown may include optional equipment and accessories and may not include all standard equipment.



Patents Pending.