

FEATURES

UPPER MACHINERY



UPPER MACHINERY

Kobelco's drive and determination to build the best machine is visible throughout the very heart of the CK1000.

Upper Frame

The upper frame is fabricated from all-welded alloy steel and is CAD designed for durable strength.



Innovative Wet-Type Disc Brake System

Kobelco's new oil cooled wet-type multi-disc brake system is first in its class and provides quiet, dependable braking power. Multiple discs are self-adjusting and self equalizing, minimizing maintenance requirements. Forced oil circulation keeps brake temperatures cooler during long, continuous operations and maximizes smooth brake operation. The completely sealed system eliminates the possibility of outside contamination, providing years of problem-free service life. The low brake pedal effort reduces operator fatigue when machine is working in the free-fall mode.

Incredibly Strong Winches

The CK1000's powerful winches boast a rated single line pull of 25,100 lbs, reducing the number of parts of line involved and improving hoisting speed. The result is dynamic lift and continuous trouble-free operations.

Large Capacity Drums

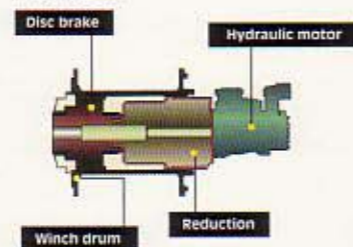
Kobelco's innovative internal disc brake system allows for the use of wider drums, reducing the chance of uneven winding, while extending the service life of the wire rope. An optional third drum is now full sized, allowing for more attachment options and better operation coordination.

Additional Features of the CK1000:

- Line speed is the fastest in this weight class, 328 ft/min (100 m/min).
- Optional gear pump is available to power attachments for foundation work.
- Swing alarm with audible swing alarm.
- Rear working lights.

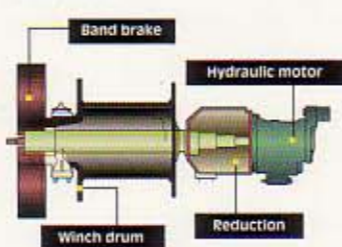
Kobelco CK1000 Std.

Wet-type disc brake installed in winch drum:



Other Cranes

Conventional, externally-fitted band brake:



KOBELCO

Your competitive edge.

CK1000	
LIFT CAP.	100 tons
BOOM	200 ft.
BOOM + JIB	190 ft. + 60 ft.



HYDRAULIC CRAWLER CRANE

With Wet-Type Multi-Disc Brakes

H17.06.10

hydro-crane

CK1000

KOBELCO CK1000

It takes a true competitive edge to get ahead in today's construction market. Good ideas are not always enough—it takes the right kind of company to make good ideas a reality.

Kobelco's new CK1000 Crawler Crane is the result of the best ideas and technologies in the world. It is engineered for efficiency, comfort, durability and productivity to be the best Kobelco has ever offered the crane market—the best crane you'll ever buy.



KOBELCO



KOBELCO CK1000

FEATURES

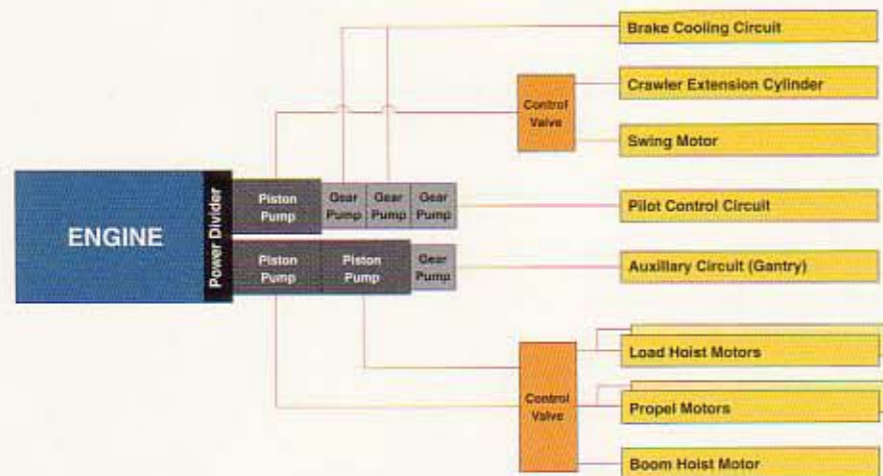
HYDRAULICS

HYDRAULICS

Kobelco has designed an innovative full hydraulic system for the CK1000. It performs all crane operations including load hoist, boom hoist, swing and propel operations, free-fall, as well as counterweight and crawler frame installation and removal.

Precision and Control

- Full hydraulic technology delivers quick and efficient operation with excellent precision.
- Proportionally assisted control allows exact manipulation of speed and power for each function in proportion to lever movement.
- Independent swing motor with planetary reducer ensures smooth swing at a maximum speed of 3.5 rpm.
- Swing disc brake is spring set and hydraulically released.



HYDRAULIC SYSTEM

Pumps:

Main Control and Swing	3 variable displacement
Pilot Control	1 gear pump
Brake and Cooling System	2 gear pumps
Gantry and Track Extension/Retraction	1 gear pump

Max discharge pressures:

Load hoist, boom hoist & propel circuit	4,480 psi (315 kg/cm ²)
Control circuit	1,140 psi (80 kg/cm ²)
Swing pressure	3,980 psi (280 kg/cm ²)

Reservoir:

119 US gal (450 liters)



CK1000

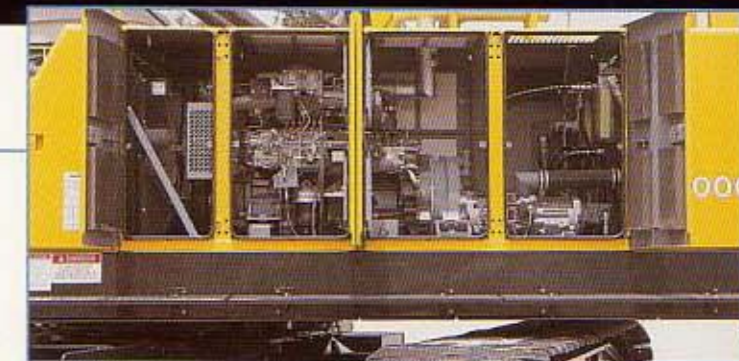
MAINTENANCE

MAINTENANCE

Tough, Maintenance-Free Durability

Careful attention has been paid to every detail of design so that the CK1000 stays on the job, not in the shop. Routine checks can be conducted easily with the help of service compartment doors that provide full access to the engine and hydraulic components. From the wet-type disc brake system to the easy-access engine layout, the CK1000 is one of the easiest machines in its class to maintain:

- Double-tapered connecting pins for base boom.
- Cast iron rollers and idler sprocket are lubricated and sealed for long, trouble-free service.
- Gantry raising/lowering cylinders.
- New machinery layout simplifies engine checks and routine maintenance.



SIMPLIFIED MAINTENANCE

The disc brakes require no brake lining replacement or adjustment for simple maintenance. Also, a new engine layout on the side of the machine provides easy access for routine inspections and servicing.

- 1 Swing Unit
- 2 Power Plant
- 3 Front Winch
- 4 Rear Winch
- 5 Third Winch
- 6 Boom Winch

